

图1 方波电路

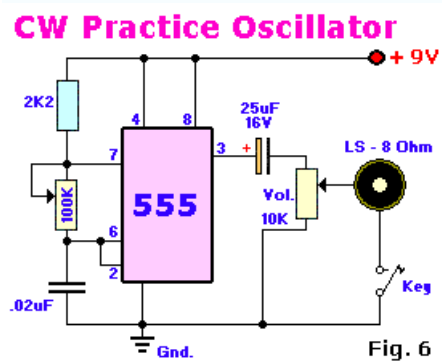


图2 振荡器实践电路

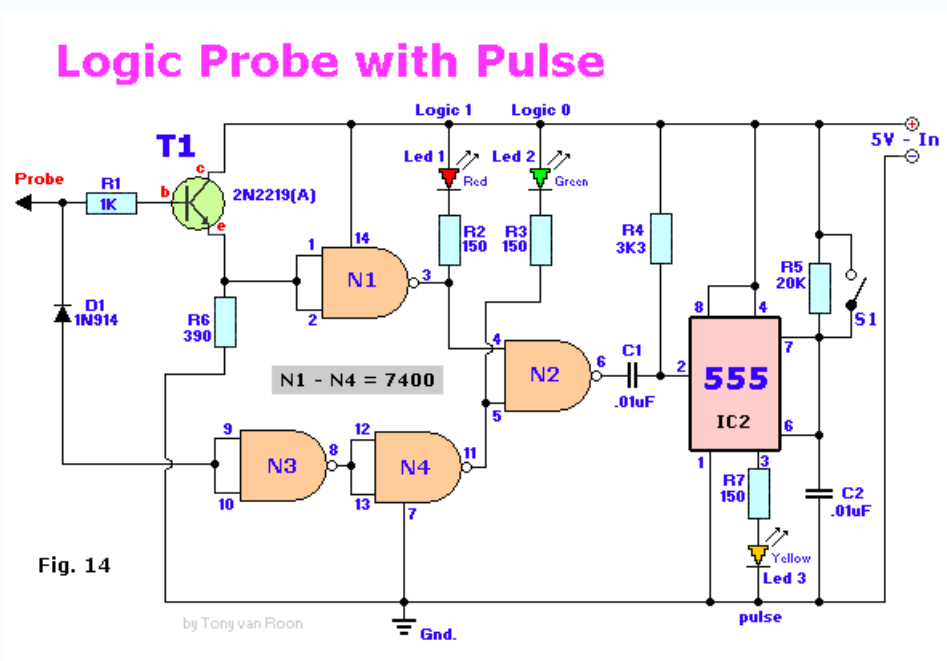


图3 GIC PROBE WITH PULSE 逻辑脉冲探头

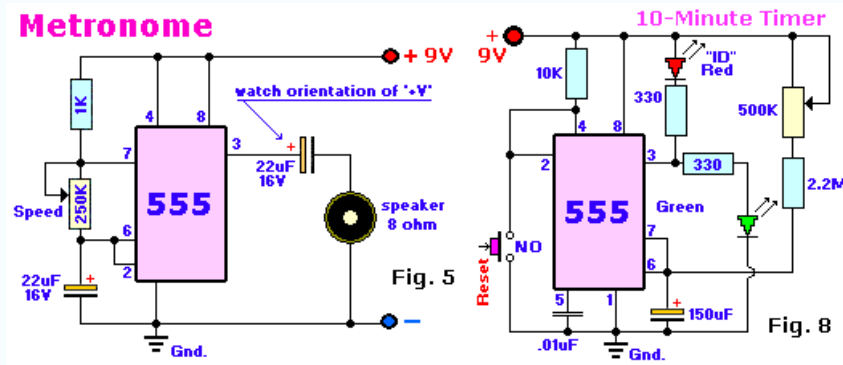


图4 TRONOME 电子节拍器电路

图5 0-5分定时器电路

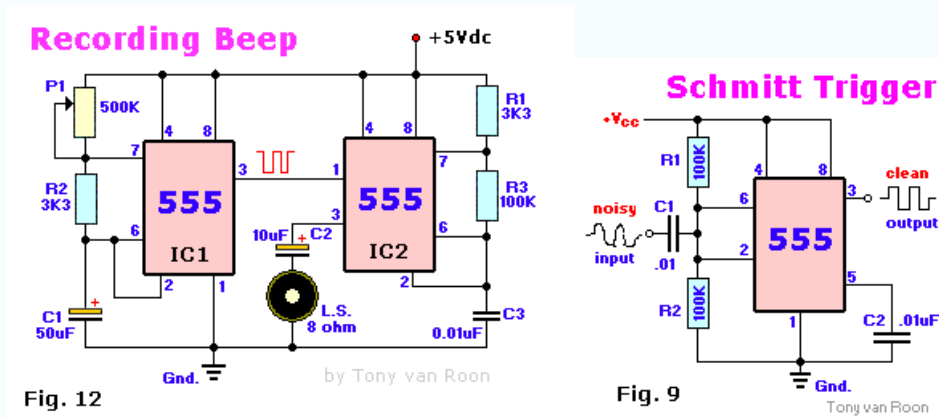


图6 铃电路图

图7 SCHMITT TRIGGER 施密特触发器电路

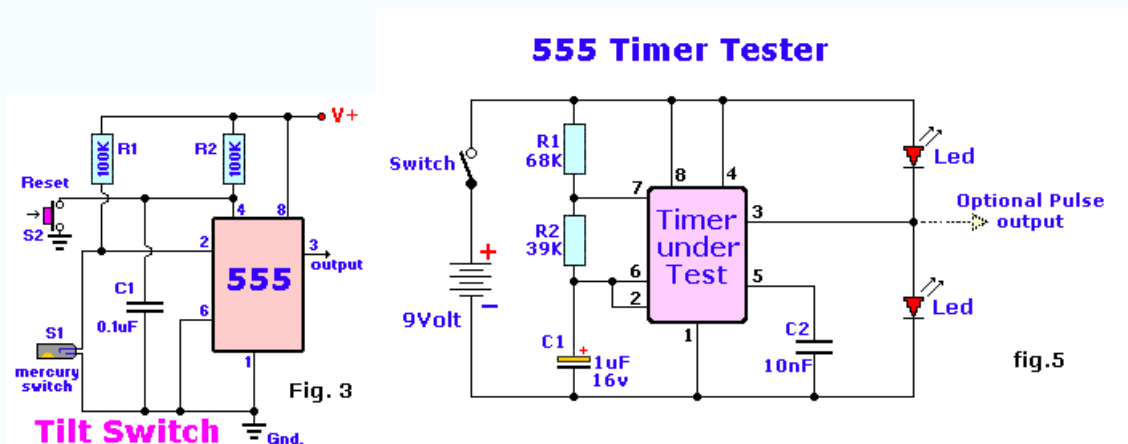


图8 倾斜开关（水银开关）传感器电路

图9TIMER TESTER 定时器测试电路

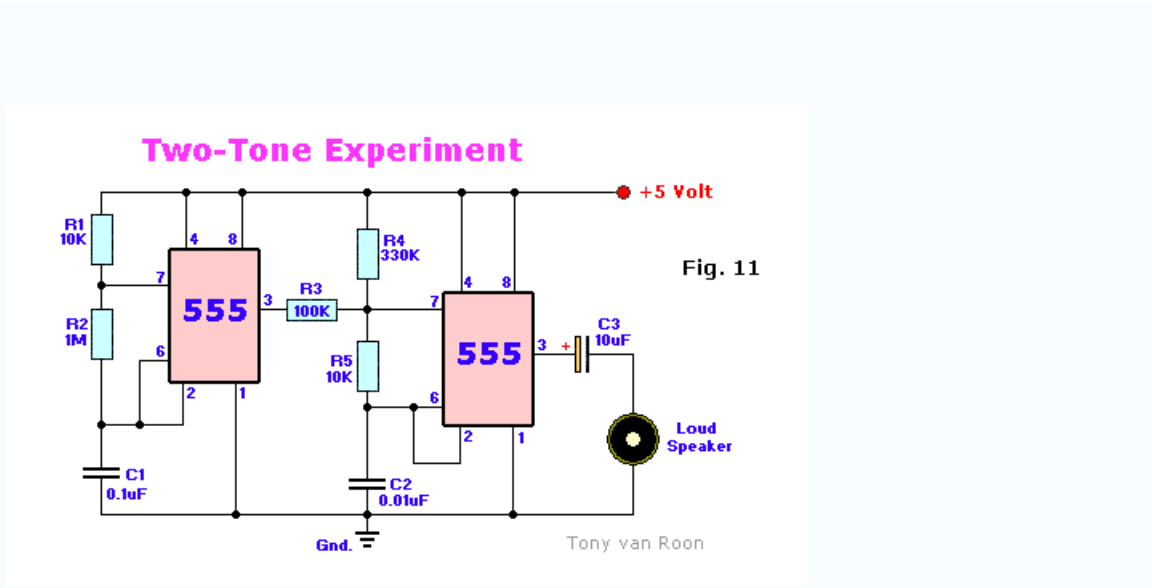


图10TWO TONE EXPERIMENT 双音实验电路

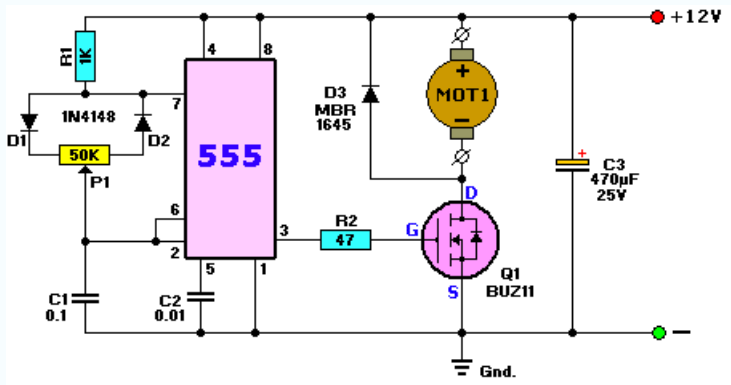


图11动机调速器电路

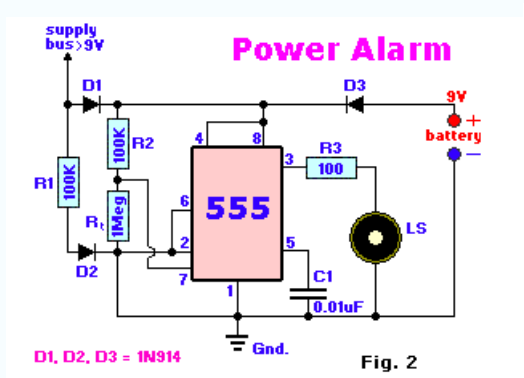


图12电源报警电路

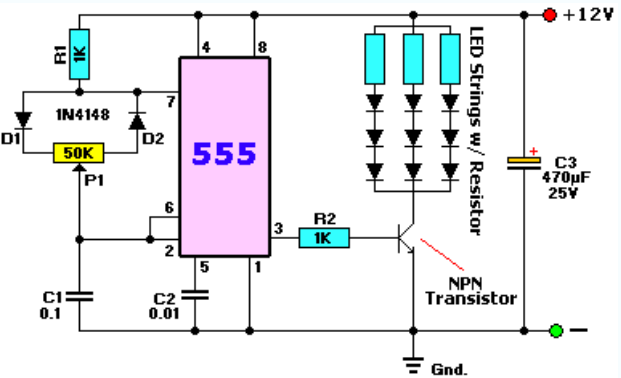


图13 LED 调光器电路

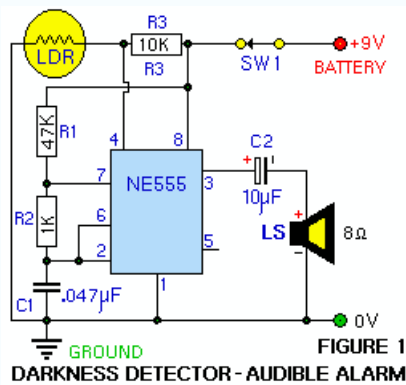


图14敏电阻光控报警电路

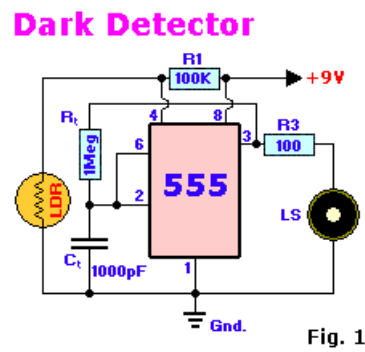


图15光敏电阻光控开关电路

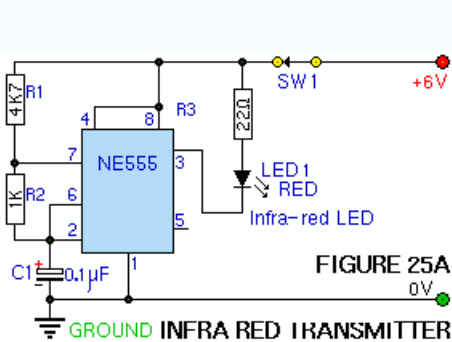


图16红外线发射电路

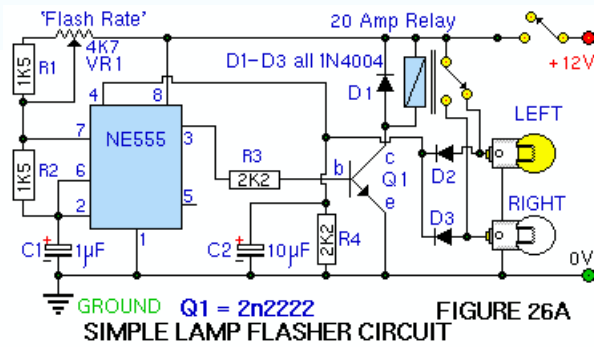


图17 简单闪光电路

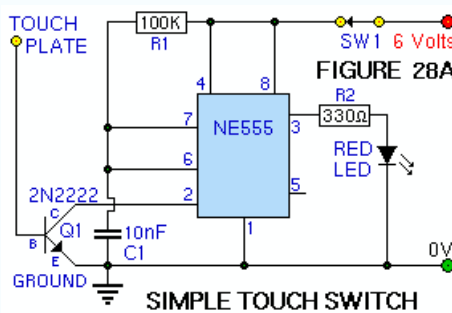


图18易触摸开关电路

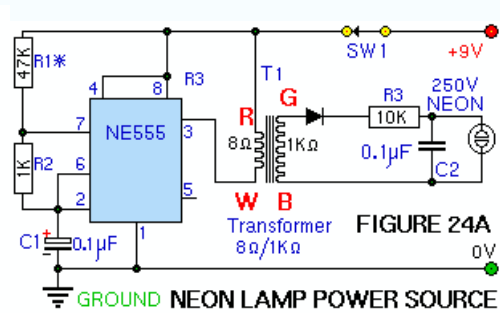


图19氖灯驱动电路

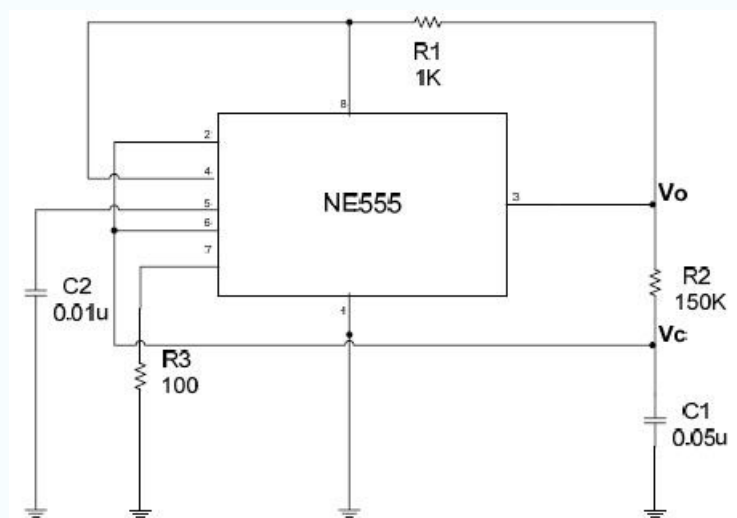


图20 50%对称波电路

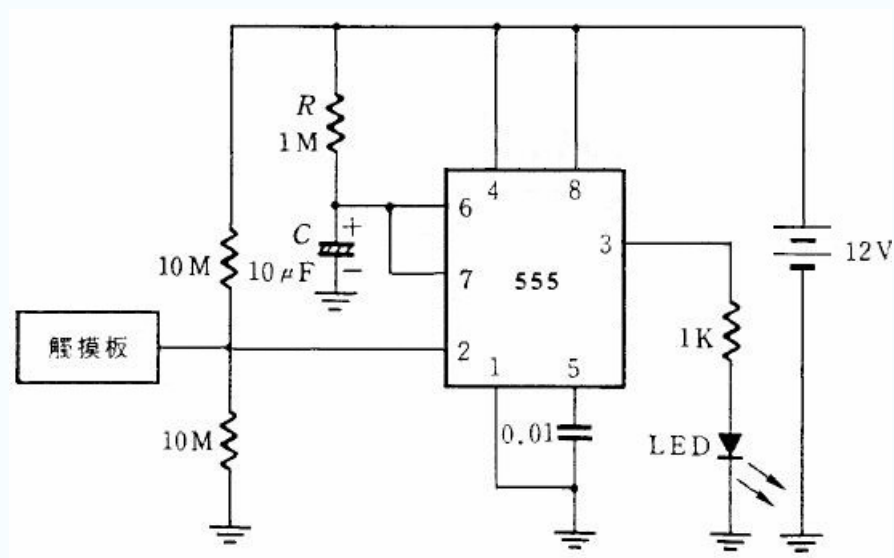


图21 触摸开关电路

图22 单稳态电路触发器

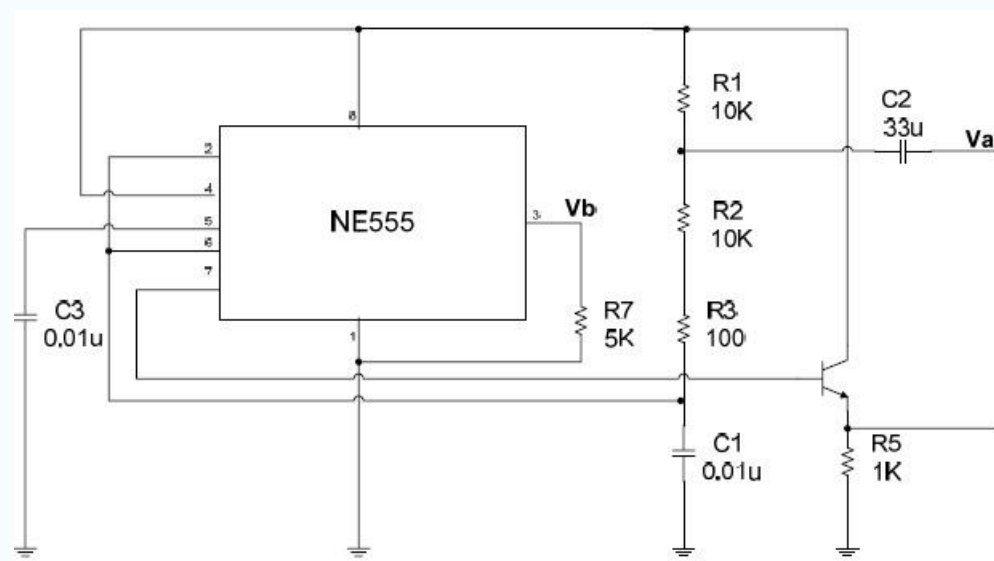


图23 锯齿波产生器